



www.latvija.travel



Where to call in an emergency (toll free)
112 - Fire-fighters, 110 - Police, 113 - Ambulance, 114 - Gas leakage

Tourists are drawn by an offer for active tourism
Own charm, history and culture.

VIDZEME is located in the north-east of Latvia, you will remember and historical



VIDZEME



Culture and traditions

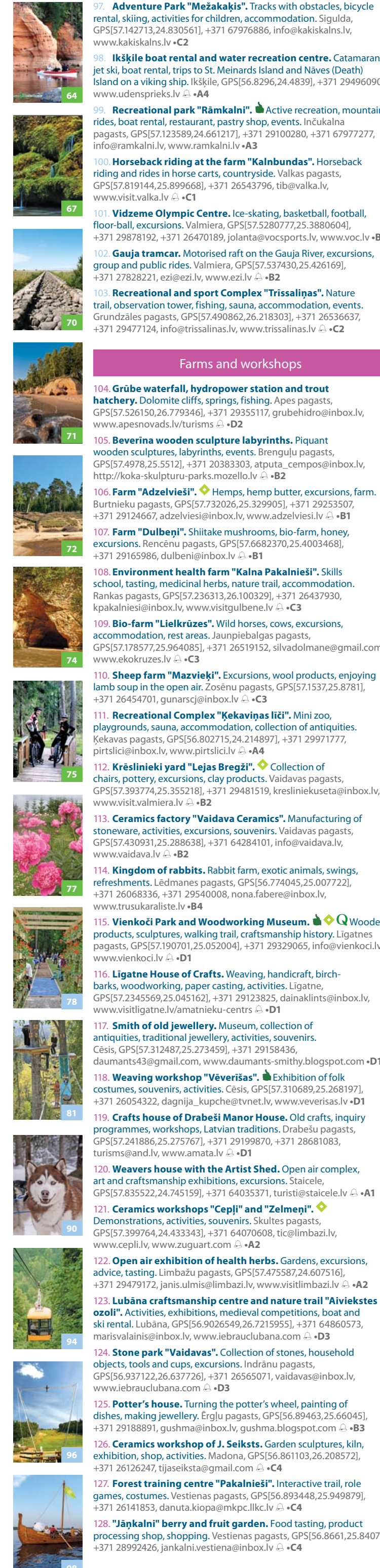
- 1. Staicele Livonian Manor "Pivāliņd". Household objects, handicraft, paintings, Livonian history and traditions.
2. Alūksne New Castle, park and fountains. 19th century neo-gothic castle, craftsmanship exhibition, exotic trees.
3. Temple Mount and Sun Bridge. Ancient Latgalian castle mound, granite rotunda, scenery and rest area.
4. Bible Museum. Collection of bibles and other religious books, exhibition on Ernst Glūks.
5. Jaunlaicene Manor House ensemble and park with a little island. 18-19th century buildings, German baron, museum, chapel, ponds, excursions.
6. V. Kirpa Ate Museum. Mill, agricultural machinery and tools, educational programme.
7. Āraši Lake Castle. Reconstruction of the wooden buildings of the lake castle, events, excursions.
8. The Daugava Museum and Dole Island Nature Park. Manor, historical exhibitions, fishing tackle, pine forests, bird watching.
9. Salaspils Memorial Ensemble "Beyond these gates the land groans". One of the largest memorial complexes in Europe commemorating the victims of Nazism.
10. Trapene Parish Museum. Exhibition on Ojārs Vāciets, activities, exhibition of tools.
11. Private museum of antiquities "Fazāni". Approx. 40,000 various objects, camping place.
12. Cēsis Castle complex. Castle ruins, 18th century, museum, excursions, activities.
13. Cēsis St. Jānis Church and Roses Square. Medieval basilica, former market square, fountain, old town.
14. Science Centre for Children "Zīnool". Interactive exhibitions, development toys.
15. Cesvaine Castle. 19th century eclecticism building, observation tower, museum, excursions.
16. Cesvaine Manor House and park. 19th century buildings, castle mound, park, excursions.
17. Stāmeriena. 19th century castle, church, history trail, horseback riding, tasting, water sports.
18. Exhibition of Tirza on historic USSR period evidence and Tirza museum of skis. Activities, excursions.
19. Gulbene-Alūksne Bānītis. Narrow gauge railway, excursions, activities, handicraft, accommodation.
20. Gulbene County History and Art Museum. Exhibitions, interactive environment, activities, excursions.
21. Gulbene tourist train. Guided towns sightseeing tours.
22. Ikšķile Church ruins on St. Meinards Island. Livonian bishop, metal cross, stone altar.
23. Dikļi Castle. 19th century building, collection of paintings and fireplaces.
24. Inquiry and Experimental Centre "Lielvārde". Science, technologies, exhibitions, activities, excursions.
25. Uldevena Castle. Renovated Latvian old wooden buildings, picnic area, excursions.
26. Andrejs Pumpurs Museum. Lāčplēšis, Lielvārde Belt, museum.
27. Ligatne Paper Factory and its workers' village. 19th century wooden buildings, basement caves, bridges, craftsmen workshops.
28. Ligošs secret underground bunker. Shelter in case of nuclear attack.
29. Live Silver Museum. Silver sculptures and jewellery, excursions in the museum and workshop.
30. Bīksēri Manor House and park. Museum of antiquities, park with sculptures, observation area.
31. Madona Local History and Art Museum. Exhibitions, excursions, activities.

- 32. Kucūri Mill. Latvian wedding traditions, mill museum.
33. Mālpils Manor House and park. Renovated 18th century building, German baron, paintings exhibitions, park, accommodation.
34. Mazsalacas County Museum. Mice museum, hunting trophies, thematic exhibitions.
35. Ogre City historic buildings and square. 20th century 30ties architecture, Brīvības Street.
36. Ogre History and Art Museum. Two permanent exhibitions, changing thematic and art exhibitions.
37. Cinema Station in Keiļene. Exhibition on Sergejs Eizenšteins, cinema technology, external installation.
38. Ungurmuīža. 18th century wooden buildings ensemble, park, tea parties, excursions, restaurant, accommodation.
39. Rauna Castle ruins and Church. Observation area, excursions.
40. Salacgrīva Museum. Fishing traditions, lamprey weir, art exhibitions, activities.
41. Ainaži Maritime Academy Museum. Sailing ship models, collection of anchors, buoys, mines and propellers.
42. Dunte Manor House and Munchausen museum. Wax figures, amusement ship, forest trail, excursions, accommodation.
43. Saulkrasti Bicycle Museum. Collection of old bicycles, bicycle accessories, excursions, bicycle rental.
44. Carnikava Local History Centre. Lamprey fishing accessories and trade, rest area, boat wharf, history.
45. Jārcānumuiža. Soviet war town, bunkers, training ordnance yard, concrete plates, guided tours only.
46. Taraida Museum-Preserve. Medieval castle, sculpture garden, exhibitions, activities, trails, souvenirs.
47. Sigulda Castle of the Livonian Order. Medieval castle ruins, observation tower, concerts.
48. More battle memorial places. Museum, military machinery, household and craftsmanship objects.
49. Jārcānumuiža. 19-20th century buildings, park, stuffed birds and animals, shooting-grounds.
50. Valmiera Old City and Valmiera Museum. Livonian Order castle ruins, Gauja tramcar, St. Simeas Church, Spices Garden.
51. Valmiera Drama Theatre. Excursions to the backstage, plays.
52. Varakļāni Manor Castle and park. Museum, guides, excursions, wedding programmes.
53. Latvian Ethnographic Open Air Museum. Craftsmen, exhibition halls, events, park.
54. Nature trail of Planči Marshland. 0.5 km trail, unspoiled high marshland.
55. Puzera nature trail of Puikule. 3 km trail, lake in the centre of the lake, picnic places.
56. Nature trail of Ierīki Mill. Waterfalls, millwheel, works of florists.
57. Zvārtke Rinks and trail along Amata. 12 km trail, rock outcrops, observation areas.
58. Witches Cliffs at Vaidava River. Sandstone outcrops, spring, Vaidava nature trail.
59. Cirišlīni nature trail. Old valley of the Gauja River, sandstone cliffs, caves, springs, waterfall.
60. Svētavots. Spring, nature park, recreational complex, bubble bath, picnic places.
61. Sietņiezis. Sandstone outcrops, observation areas, hike, Gauja River.
62. Ligate nature trails. Wild animals, birds, forest walks, excursions.
63. National Botanical Garden. The largest collection of flora in the Baltic States, modern complex of greenhouses, walking tracks,

- classes for students.
64. Skanpiskals nature park. Nature trails, sandstone outcrops, caves, wooden sculptures, excursions.
65. Jēči nature trail. Cairns, mill, marshland, wild horses, rest areas.
66. Šapovskas Dendrological park. Walking trails, exotic bushes and trees, pond, observation tower.
67. Rauna Staburags. Calcareous tufa, spring water.
68. Livonian sacrifice cave at Svētupe. Sandstone cave, one of the longest in Latvia, ancient symbols, cult place.
69. Red cliffs at Salaca. 400 m sandstone outcrop on the river bank.
70. Ainaži Northern pier. 0.5 km boulder pier, wetlands, bird watching.
71. Vецmezīti cliffs. 6 m high sandstone cliff at the sea.
72. White Dune and Sunset trail. Hike along the coast, dunes, beach, sunset, observation areas.
73. Sea park. Relaxing by the sea, coast, health, beach.
74. Gūtmanis Cave and Gauja National Park. Sandstone cave, the largest in the Baltics, spring, Sigulda.
75. Cērtene castle mound, Smiltene cycling trails. 25 m high, cult place, nature trail, 6 forest lakes, 3 different length cycling trails.
76. Nature trails of Zīle and Vekši. Nature trail in the Gauja River, relaxing by the river bank, wildlife.
77. Kalsnava arboretum. Collections of bushes and trees, peonies, walking trails, observation tower.
78. "Sajūtu parks" of the Steep Banks of the Gauja River and the Trail in the trees. 80 m wide and 10-15 m high banks.
79. Cēsis Paintball Park. Paintball field, equipment rental, picnic places.
80. Zagarkalns. Mountain skiing, equipment rental, instructor, boat rental, camping.
81. Ozolkalns. Mountain skiing, equipment rental, recreational park, camping.
82. Recreational park "Braku takas". Wire rope rides, activities, disc golf.
83. Active Recreation Centre "Vanagkalns". Cross-country skiing, ski rental, ice climbing, snow mobiles.
84. "Horse-Breeders Kocēni". Horseback riding, sledges, excursions.
85. Zircgaudeztaivakocēni. Nature trail, activities, skiing, café.
86. Sports and Recreational Base "Smeceres sils". Activities, cycling, BMX, skiing, camping.
87. "Purvui bridēji". Snowshoe hike in a bog, excursions, events, equipment rental.
88. Raft "Ruhjas Donārs". Rafting on the Rūja River with a motor-raft.
89. Svings park in Keiļene. Rest areas, sauna, observation tower.
90. "Sniega suni". Rides in dog-carts and sleds.
91. Vējiņi underground lakes. Underground lakes, sinkholes, castle mound, excursions, accommodation.
92. Mārkulīči. Hunting, shooting sport, activities, camping, boat rental.
93. Bobsleigh and luge track. Rides with bobsleighs or rubber bobsleighs, viewing of the track, observation towers.
94. Air wire-rope path over the Gauja River. The only wire-rope path in the Baltics, aerial tramway.
95. Sports and Active Recreation Centre "Sigulda". Cross-country skiing, 1.25 km track, ski rental, servicing, instructors.
96. Adventure Park "Tarzáns". Track with obstacles, mountain rides, seated lift, catapult, activities for children.
97. Adventure Park "Mežakalns". Tracks with obstacles, bicycle rental, skiing, activities for children.
98. Ikšķile boat rental and water recreation centre. Catamaran, jet ski, boat rental, trips to St. Meinards Island.
99. Recreational park "Rāmkalni". Active recreation, mountain rides, boat rental, restaurant, pastry shop.
100. Horseback riding at the farm "Kalnbūdas". Horseback riding and rides in horse carts.
101. Vidzeme Olympic Centre. Ice-skating, basketball, football, floor-ball, excursions.
102. Gauja tramcar. Motorised raft on the Gauja River.
103. Recreational and sport complex "Trissalinās". Nature trail, observation tower, fishing, sauna, accommodation, events.
104. Grūbe waterfall, hydropower station and trout hatchery. Dolomite cliffs, springs, fishing.
105. Beverina wooden sculpture labyrinth. Piquant wooden sculptures, lyrical events.
106. Farm "Adzelviēši". Hemp, hemp butter, excursions, farm.
107. Farm "Dulbeni". Shitake mushrooms, bio-farm, honey, excursions.
108. Environment health farm "Kalna Pakalniēši". Skills school, tasting, medicinal herbs, nature trail.
109. Bio-farm "Lielkūzes". Wild horses, cows, excursions, accommodation, rest areas.
110. Sheep farm "Mazviēši". Excursions, wool products, enjoying lamb soup.
111. Recreational Complex "Kekavainas līči". Mini zoo, playgrounds, sauna, accommodation.
112. Krēslīnieki yard "Laiša Bregži". Collection of chairs, pottery, excursions, clay products.
113. Ceramics factory "Vaidava Ceramics". Manufacturing of stoneware, activities, excursions.
114. Kingdom of Rabbits. Rabbit farm, exotic animals, swings, refreshments.
115. Vienkoci Park and Woodworking Museum. Wooden products, sculptures, walking trail.
116. Ligate House of Crafts. Weaving, handicraft, birch-barks, woodworking, paper casting.
117. Smith of old jewellery. Museum, collection of antiquities, traditional jewellery.
118. Weaving workshop "Vēverīšas". Exhibition of folk costumes, souvenirs.
119. Crafts house of Krabeši Manor House. Old crafts, inquiry programmes.
120. Anders house with the Artist Shed. Open air complex, art and craftsmanship exhibitions.
121. Ceramics workshops "Ceplī" and "Zelmeņi". Demonstrations, activities, souvenirs.
122. Open air exhibition of health herbs. Gardens, excursions, advice, tasting.
123. Lubāna craftsmanship centre and nature trail "Aiviekstes ozoli". Activities, exhibitions, medieval competitions.
124. Stone park "Vaidavas". Collection of stones, household objects, tools and cups.
125. Potter's house. Turning the potter's wheel, painting of dishes, making jewellery.
126. Ceramics workshop of L. Seiksts. Garden sculptures, kiln, exhibition, shop, activities.
127. Forest training centre "Pakalniēši". Interactive trail, role games, costumes.
128. "Jānkalni" berry and fruit garden. Food tasting, product processing shop.



- Farms and workshops
129. Starspace observatory. Star watching, physics experiments, exciting story telling.
130. Farm "Jaunlūksteiņi". Mini zoo, ornaments of ostrich eggs, rest area.
131. Sculptor's creative workshop "Ezeriņi". Artworks from stone, glass and metal.
132. Bio-farm "Jaun-leivinas". Wild horses, countryside goodies, accommodation.
133. Rauna Kiln. Ceramics workshop, activities, excursions, souvenirs.
134. Farm "Ezerlejas". Mini zoo, Exotic birds and animals, excursions, fishing, eco-cosmetics.
135. Vičieme cone drying-kiln. One of the oldest cone drying-kilns in Latvia.
136. Ethnographic yard "Ielicās". National importance cultural monument.
137. Deer Park "Jasmini". Deer and does, sporting cattle and sheep.
138. Piebalga China Factory. Excursions in the factory, painting on china.
139. Carpenter's workshop. Wood craftsmanship, activities, games, excursions.
140. Klimpas. Farm, sheep-farming, wool products, crop farming.
141. Lejnieki. Bio-farm, animals, tasting, excursions.
142. Baltic Bonsai Park. Japanese garden, bonsai trees, souvenirs.
143. Culinary heritage
144. Brenguļi Brewery. Beer garden, Abulis River, rest area.
145. Backyard farm "Vinkalni". Italian pizzas, camps, excursions.
146. Valmiermuiža Brewery. Excursions, tasting, beer cuisine.
147. Farm "Vecpāniņi". Wine tasting, fruit and berry growing.
148. Liberti Birch juice and wine basement. Excursions, tasting.
149. Camping/restaurant "Lauču akmeņs". Relaxing by the sea.
150. Goat farm and cheese making "Livi". Goat flock, tasting.
151. House wines "Domu pieturta". Conversations, tasting, shop.
152. Lakstina piensaimnieks. Factory tours, dairy product tasting.
153. Naukšēni Cilvēkmūzejs and Naukšēni wines. 19th century manor house.
154. Rūjiena ice-cream. Ice-cream factory, video, tasting.
155. Keiļene gingerbreads. Baking and decorating of gingerbreads.
156. SierStēles - home-made cheese products. Excursions, tasting, shop.
157. Normunds Labrenčis' home-made wines. Wine from local fruit and berries.
158. Rauna cheese and pasta factory. Green cheese, pasta, tasting.
159. Country house "Donas". Bread baking, sports activities.
160. Smiltene cider brewery. Apple cider, berry wine.
161. Ligate winery. Basement caves, tasting, excursions.
162. Zilver winery. House wine, tasting, excursions, crop farming.



EDEN

Ainaži. Valdemāra iela 50a, Ainaži, Salacgrīvas novads, LV-4035, GPS[57.864143,24.360809], +371 64043241, inta.brige@salacgriva.lv •A1

Aloja. Lielā iela 13, Staicele, Staiceles pagasts, Alojas novads, LV-4043, GPS[57.83928,24.732971], +371 64035371, +371 27806452, turisti@staicele.lv, www.aloja.lv •A1

Alūksne. Pils iela 25a, Alūksne, Alūksnes novads, LV-4301, GPS[57.424414,27.048782], +371 64322804, +371 29130280, tic@aluksne.lv, www.aluksne.lv •D2

Amata-lerīki. Lerīki, Kumadas iela 2, Drabešu pagasts, Amatas novads, LV-4139, GPS[57.209279,25.170549], +371 28681083, turisms@and.lv, www.amata.lv •D1

Ape. Skolas iela 4, Ape, Apes novads, LV-4337, GPS[57.537907,26.693763], +371 64322273, +371 22037518, tic@ape.lv, www.apesnovads.lv •D2

Burtiņki. Jaunatnes iela 15, Burtiņki, Burtiņiek pagasts, Burtiņiek novads, LV-4206, GPS[57.694414,25.2773402], +371 25770008, +371 22033707, turisms@burtiniekunovads.lv, www.burtiniekunovads.lv •B1

Carnikava. Stacijas iela 5, Carnikava, Carnikavas novads, LV-2163, GPS[57.127856,24.278843], +371 67708443, +371 29326285, tic@carnikava.lv, www.tourism.carnikava.lv •A3

Cesvaine. Pils iela 1, Cesvaine, Cesvaines novads, LV-4871, GPS[56.969419,26.312611], +371 64852225, +371 26172637, turisma.info@cesvaine.lv, www.cesvaine.lv •C3

Cēsis. Pils laukums 9, Cēsis, Cēsu novads, LV-4101, GPS[57.313393,25.272346], +371 64121815, +371 28318318, info@cesiv.lv, www.tourism.cesis.lv •D1

Ergļi. Rīgas iela 10, Ergļi, Ergļu pagasts, Ergļu novads, LV-4840, GPS[56.899111,25.642504], +371 64871299, info@ergli.lv, www.ergli.lv •B4

Gauja National Park - Zvarte Rock. Drabešu pagasts, Amatas novads, LV-4110, GPS[57.255753,25.144958], +371 29335446, zac@gnp.lv, www.gnp.lv •D1

Gauja National Park - Gutmanis Cave. Turaidas iela 2a, Sigulda, Siguldas novads, LV-2150, GPS[57.173241,24.841633], +371 26657661, gac@gnp.lv, www.gnp.lv •C1

Gauja National Park - Ligatne Nature Trails. Ligatnes dabas takas, Ligatnes pagasts, Ligatnes novads, LV-4108, GPS[57.248333,25.029945], +371 64153313, +371 28328800, ldtac@gnp.lv, www.gnp.lv •D1

Gaujiena. "Pilskalni", Gaujienas pagasts, Apes novads, LV-4339, GPS[57.515141,26.399169], +371 64381601, +371 28386923, gaujiena.info@ape.lv, www.apesnovads.lv •C2

Gulbene. Q Abeļu iela 2, Gulbene, Gulbenes novads, LV-4401, GPS[57.172092,26.760056], +371 64497729, +371 26557582, turists@gulbene.lv, www.visitgulbene.lv •D3

Iksķīle. Bizres iela 33a, Iksķīle, Iksķīles novads, LV-5052, GPS[56.836671,24.494878], +371 65027221, turisms@iksksile.lv, www.iksksile.lv/turisms •A4

Jaunpiebalga. Gaujas iela 2, Jaunpiebalga, Jaunpiebalgas novads, LV-4125, GPS[57.1842,26.0597], +371 26412962, tic@jaunpiebalga@gmail.com •C3

Kalsnava Arboretum. Jaunkalsnava, Kalsnavas pagasts, Madonas novads, LV-4860, GPS[56.686222,25.951141], +371 27841099, s.rukmane@lm.lv, www.madona.lv •C4

Koknese. Melioratoru iela 1, Koknese, LV-5113, GPS[56.643773,25.445734], +371 65161296, turisms@koknese.lv, www.koknese.lv •B4

Ķekava. Rīgas iela 26, Ķekava, Ķekavas novads, LV-2123, GPS[56.828800,24.23863], +371 29359409, +371 67935826, turisms@kekava.lv, www.parturismu.lv •A4

Limbāzi. Q Torna iela 3, Limbāzi, Limbāžu novads, LV-4001, GPS[57.514895,24.714171], +371 64070608, +371 28359057, tic@limbazi.lv, www.visitlimbazi.lv •A2

Ligmatne. Q Sprīņu iela 2, Ligatne, Ligatnes novads, LV-4110, GPS[57.233009,25.040094], +371 64153169, +371 29189707, info@visitligatne.lv, www.visitligatne.lv •D1

Madona. Skolas iela 10, Madona, Madonas novads, LV-4801, GPS[56.852816,26.215118], +371 64823844, +371 29130437, tic@madona.lv, www.madona.lv •C4

Mazsalaca. Rūjienas iela 1, Mazsalaca, Mazsalacas novads, LV-4215, GPS[57.8606,25.0558], +371 28374774, turisms@mazsalacasnovads.lv, www.mazsalaca.lv •B1

Ogre. Brīvības iela 12a, Ogre, Ogres novads, LV-5001, GPS[56.814762,24.601875], +371 65071883, +371 29491685, info@visitogre.lv, www.visitogre.lv •A4

Pārgauja. Ezeriņi, Stalbes pagasts, Pārgaujas novads, LV-4151, GPS[57.375721,25.039163], +371 26620422, pargauja.turisms@pargaujansnovads.lv, turisms@pargaujansnovads.lv •D1

Plavinas. Daugavas iela 50, Plavinas, Plavīņu novads, LV-4120, GPS[56.599901,25.654879], +371 22000981, vitajesere@inbox.lv, www.plavinunovads.lv •C4

Rauna. Valmieras iela 1a, Rauna, Raunas novads, LV-4131, GPS[57.332348,25.608999], +371 6417014, +371 2775764, raunatic@gmail.com, www.rauna.lv •B2

Rūjiena. Upes iela 7, Rūjiena, Rūjienas novads, LV-4240, GPS[57.895913,25.324819], +371 64263278, +371 29464888, tic@rujiena.lv, www.rujiena.lv •B1

Salacgrīva. Rīgas iela 10a, Salacgrīva, Salacgrīvas novads, LV-4033, GPS[57.751827,24.356281], +371 26463025, +371 64041254, liene.tiesnese@salacgriva.lv, baiba.gobina@salacgriva.lv, www.visitsalacgriva.lv •A1

Salaspils. Q Miera iela 1, Salaspils, LV-2169, GPS[56.8610234,24.3530024], +371 67945440, visit@salaspils.lv, visit.salaspils.lv •A4

Saulkrasti. Q Ainažu iela 13b, Saulkrasti, Saulkrastu novads, LV-2160, GPS[57.266701,24.413424], +371 67952641, tic@saulkrasti.lv, www.visitsaulkrasti.lv •A3

Sigulda. Auseklis iela 6, Sigulda, Siguldas novads, LV-2150, GPS[57.153182,24.853715], +371 67971335, info@sigulda.lv, www.tourism.sigulda.lv •C1

Smiltene. Dārza iela 3, Smiltene, Smiltēnes novads, LV-4729, GPS[57.424068,25.907763], +371 64707575, +371 29395200, turisms@smiltene.lv, www.smiltene.lv •C2

Strenči. Rīgas iela 7, Strenči, Strenču novads, LV-4730, GPS[57.627625,25.683975], +371 64715667, tic@strencunovads.lv, www.strencunovads.lv •B2

Valka. Rīgas iela 22, Valka, Valkas novads, LV-4701, GPS[57.774189,26.019478], +371 64725522, +371 26446602, tib@valka.lv, www.valka.lv, www.visitvalka.lv •C1

Valmiera. Q Rīgas iela 10, Valmiera, LV-4201, GPS[57.538204,25.421227], +371 64207177, tic@valmiera.lv, visit.valmiera.lv •B2

Valmiermuiza. Dzirnauva iela 2, Valmiermuiza, Valmieras pagasts, Burtiņiek novads, LV-4219, GPS[57.555437,25.432004], +371 29135438, ciemos@valmiermuiza.lv, www.valmiermuiza.lv •B2

Varakļāni. Pils iela 29, Varakļāni, Varakļāņu novads, LV-4838, GPS[56.607744,26.776210], +371 6486162, varaklanu@inbox.lv, www.varaklanu.lv •D4

Vecpiebalga. "Zvirbuliši", Vecpiebalgas pagasts, Vecpiebalgas novads, LV-4119, GPS[57.159592,25.664364], +371 26110724, info.vecpiebalga@inbox.lv, www.piebalgamuzeji.lv •C3



Legend and Distance between cities (km) table. Legend includes icons for tourist info, active recreation, accommodation, national parks, cultural traditions, farms, cycling itineraries, nature, and culinary heritage. Distance table shows distances between major cities like Valka, Sigulda, Riga, Ogre, Madona, etc.

Accommodation and travel agencies

- 1. "Annas Hotel". Design hotel, restaurant, SPA, festivities, manor house park...
2. "Springļu dzirnavas". Guest house, festivities, workshop rooms, sauna...
3. "Minhauzena Unda". Hotel, café, festivities, active recreation, sea...
4. "Ergļi". Hotel, café, festivities, sauna, pool...
5. "Port Hotel". Hotel, restaurant, SPA, festivities, active recreation...
6. "Kalna Ligzda". Hotel, café, sauna, tasting, excursions...
7. "Volmar". Hotel, restaurant, conference, workshop rooms...
8. "Gungas". Ethnographic guest house, festivities, sauna, active recreation...
9. Recreational complex "Mazais Ansis". Accommodation, café, festivities...
10. Recreational complex "Purgāļi". Accommodation, catering, festivities...
11. Recreational complex "Vonadžiņi". Accommodation, catering, festivities...
12. Recreational complex "Meža salas". Accommodation, catering, camping...
13. Recreational complex "Ratnieki". Accommodation, festivities, active recreation...
14. Camping "Leiputrija". Active recreation, cycling routes, nature...
15. "Apalkains". Camping, active recreation, cycling routes, nature...
16. "Green Camping". Accommodation, camping, active recreation...
17. "Kriminalieki". Accommodation, camping, active recreation...
18. "Kosiši". Guest house, sauna, active recreation, cycling routes...
19. "Celmi". Holiday home, sauna, active recreation, nature...
20. "Melturi". Guest house, catering, sauna, active recreation...
21. "Spārņu kalns". Guest house, catering, festivities, sauna, active recreation...
22. "Nītaures dzirnavas". Guest house, recreation, festivities, sauna, active recreation...
23. "Lāču mīga". Guest house, festivities, sauna, active recreation...
24. "Kalbakas". Country house, sauna, active recreation, animals...
25. Birni Castle and park. 19th neogothic century building...
26. Igate Castle complex. 19th neorenaissance century building...
27. Zvartava Castle. Accommodation, excursions, banquet hall...
28. Jonathan SPA Estate. Hotel, restaurant, Latvian cuisine...
29. SPA resort "Mārcienas muži". Hotel, restaurant, Latvian cuisine...
30. "Porto Resort". Hotel, restaurant, SPA, banquet hall...
31. "Spadrops". Hotel, swimming pool, SPA, sauna...
32. Tourism and transport agency "Balt-go". Excursions, transport rental...
33. Tourism agency "PRO Travel". Excursions, trips, hotel bookings...
34. Tourism agency "Travel Biz". Excursions, trips, Cēsis.

Vidzeme Tourism Association recommends
Latvian heritage
owner of the "Q-Latvia" quality system certificate

Cycling itineraries

Cycling itinerary "Tour de LatEst"
Cycling itinerary "EuroVelo 13"
Cycling itinerary "EuroVelo 13"

Legend
Scale 1 : 700 000